

**Paper Reference(s) 1BI0/2H**  
**Pearson Edexcel Level 1/Level 2 GCSE (9–1)**

**Biology**  
**PAPER 2**  
**Higher Tier**

**Diagram Booklet**

## INSTRUCTIONS

**THIS DIAGRAM BOOKLET MUST NOT BE RETURNED WITH  
THE QUESTION PAPER AT THE END OF THE EXAMINATION.**

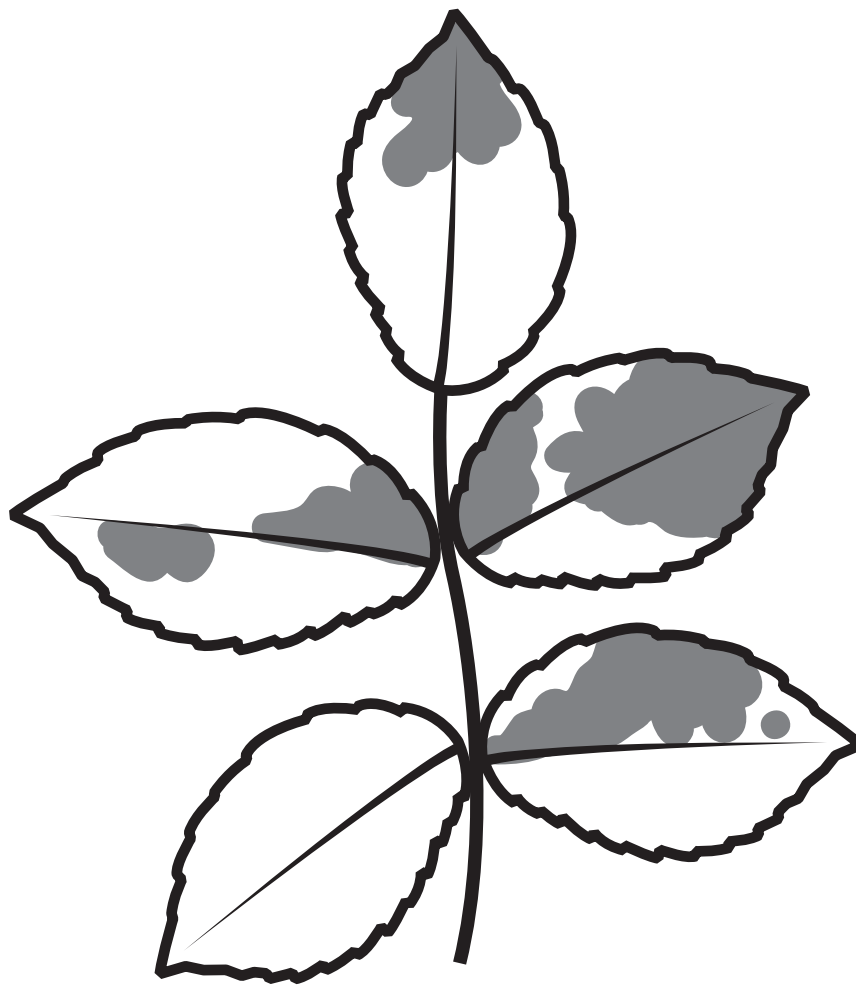
## Contents

### Page

4	Question 1(b)
5	Question 2(a)
6	Question 2(b)
7	Question 3(a)
8	Question 4(a)
9	Question 4(b)
10	Question 4(c)(ii)
11	Question 5(b)
12	Question 6(c)
13	Question 7(a)
14	Question 8(a)(iii)
15	Question 9(a)
16	Question 10(b)(ii)

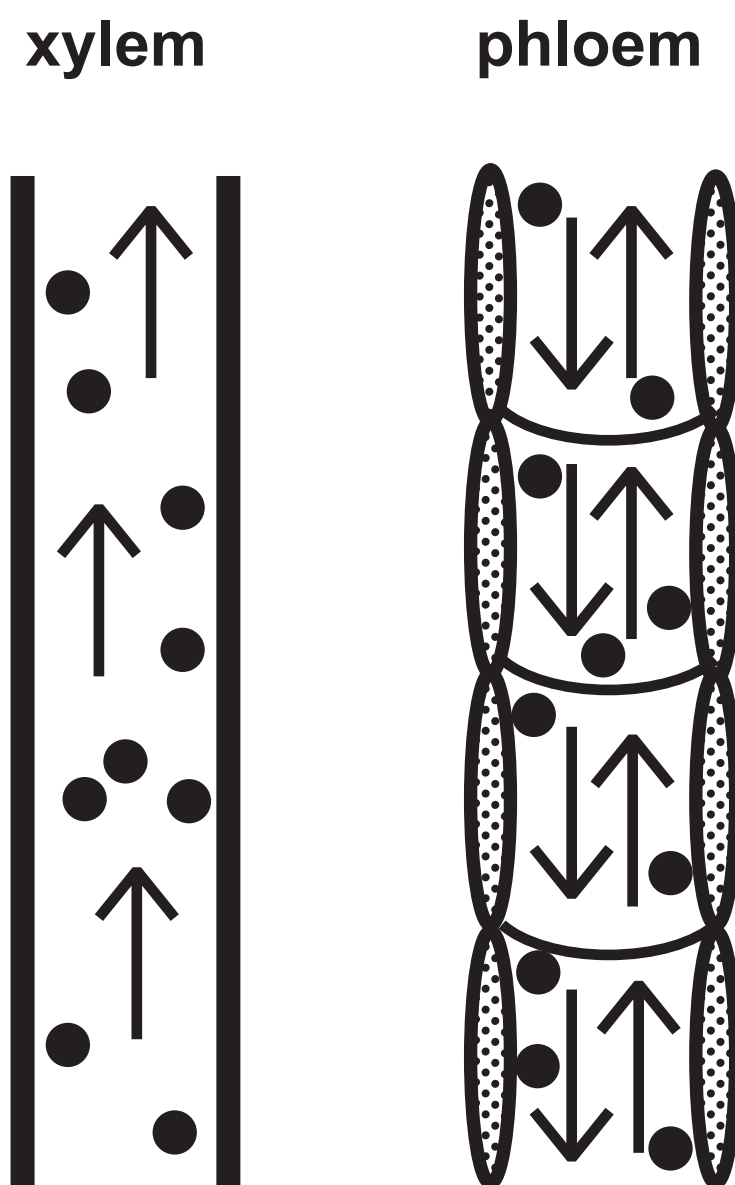
## Question 1(b)

FIGURE 1



## Question 2(a)

FIGURE 2



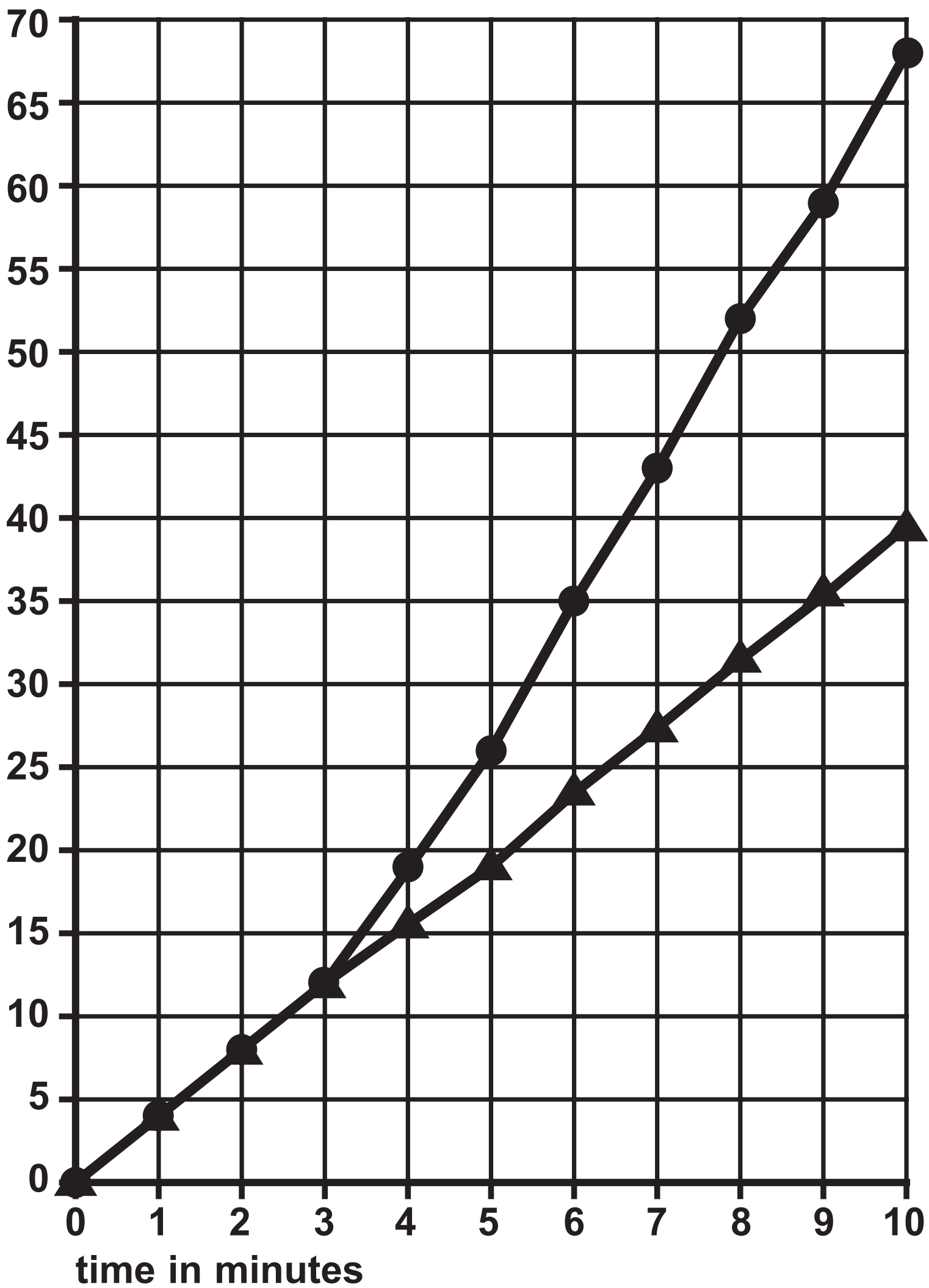
## Question 2(b)

FIGURE 3

—●— fan switched on after three minutes

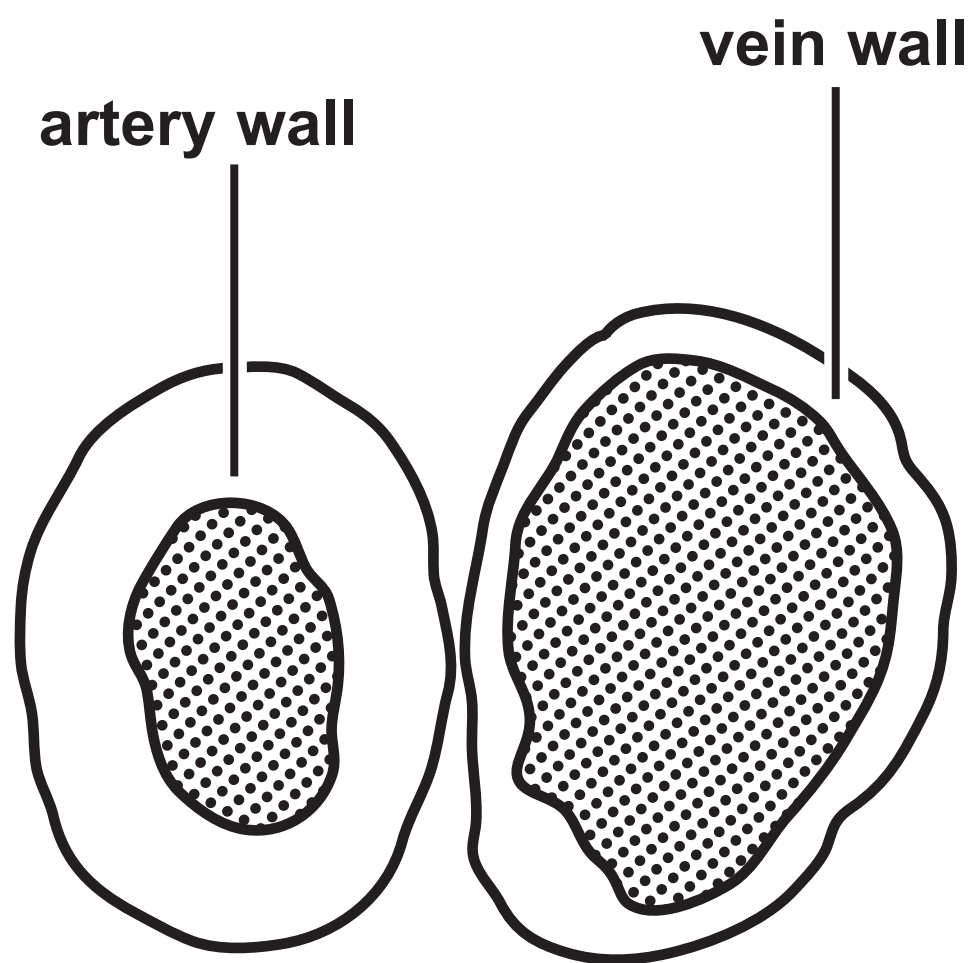
—▲— fan not switched on

volume of water  
taken up by the plant



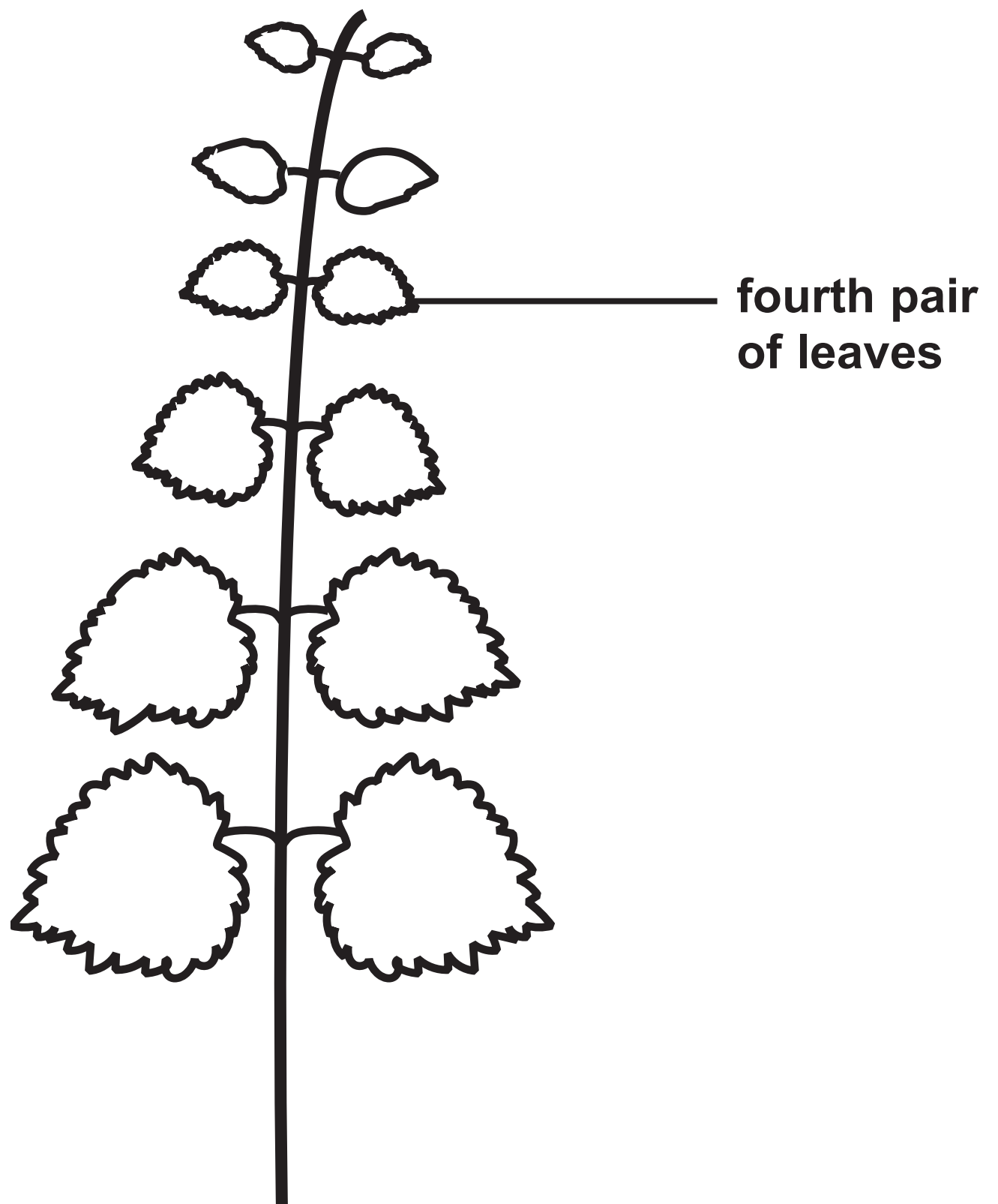
## Question 3(a)

FIGURE 4



## Question 4(a)

FIGURE 5





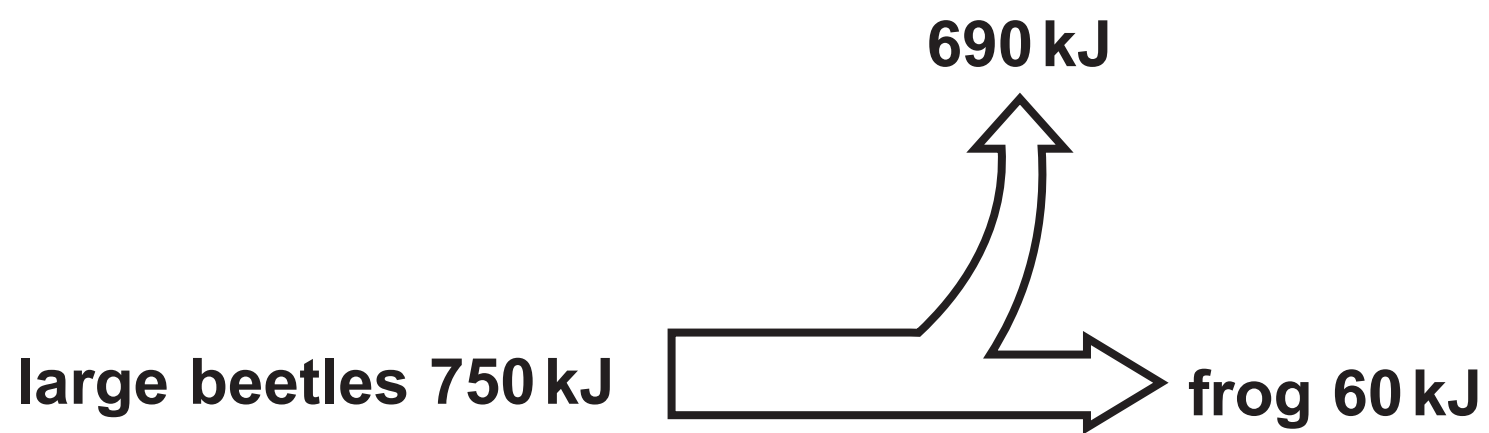
## Question 4(b)

FIGURE 6

nettle plant	width of the leaf in millimetres (mm)	
	area A (in shade)	area B (in sunlight)
1	45	33
2	50	25
3	48	27
4	52	48
5	47	28
mean	48	28

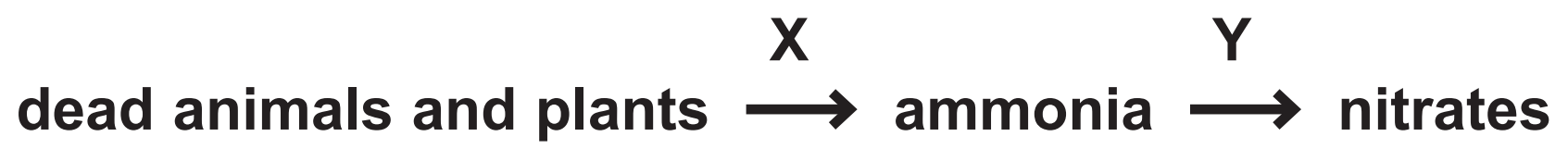
## Question 4(c)(ii)

FIGURE 7



## Question 5(b)

FIGURE 9



Question 6(c)

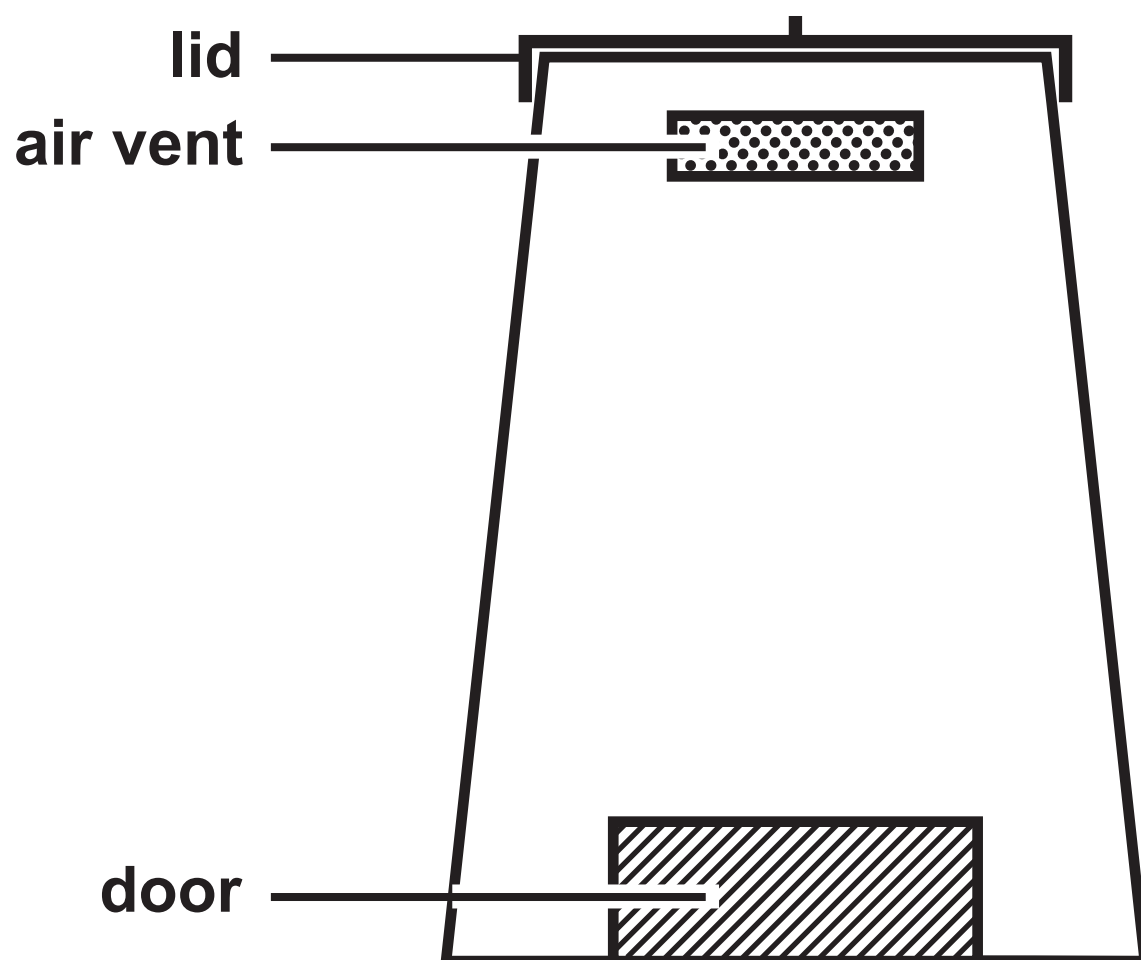
FIGURE 10

blood test	woman's result	normal range
TSH level	5·6 mU/l	0·4 to 4·9 mU/l
thyroxine level	27·5 pmol/l	9·0 to 21·0 pmol/l
red blood cell count	$5·2 \times 10^6$ cells/ $\mu$ l	4·2 to $5·4 \times 10^6$ cells/ $\mu$ l
glucose level	82·0 mg/dl	72·0 to 99·0 mg/dl

## Question 7(a)

FIGURE 11

- add soil in between layers of vegetation
- mix the contents of the compost bin once a month to add air
- keep the lid on to prevent water entering



Question 8(a)(iii)

FIGURE 13

type of exercise	heart rate in bpm				
	0 minutes	5 minutes	10 minutes	15 minutes	20 minutes
running	90	156	168	180	180
walking	90	96	90	96	90

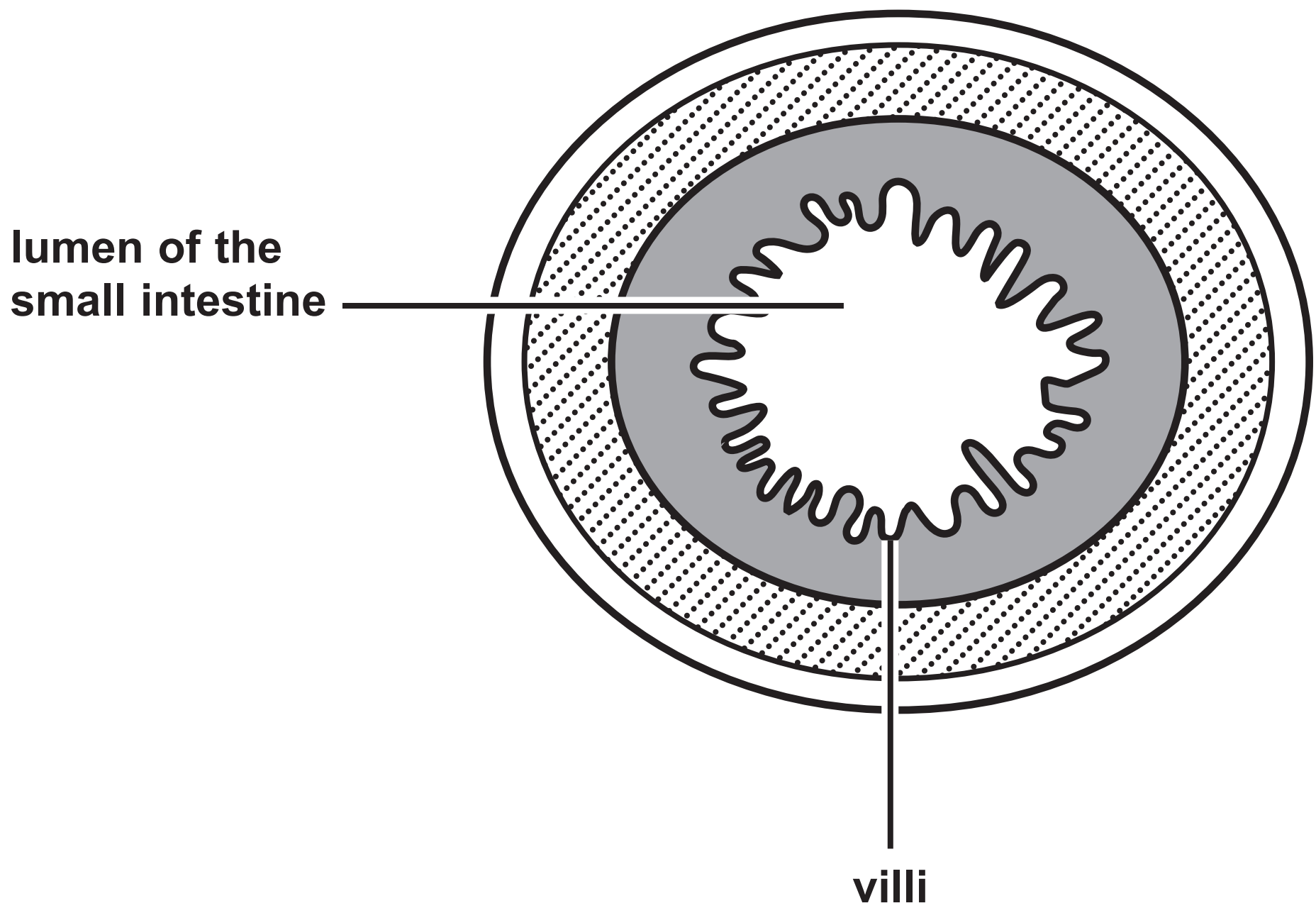
Question 9(a)

FIGURE 14

month	March	July
number marked in the first sample	18	12
size of the second sample	22	18
number of recaptured animals	8	10
population size	50	

## Question 10(b)(ii)

FIGURE 15





**Question 1(b)**

**(Source adapted from: © Manfred Ruckszio/Shutterstock)**

**Question 3(a)**

**(Source adapted from: © The University of Kansas Medical Center)**

**Question 4**

**(Source adapted from: © Alila Medical Media/Shutterstock)**

**Question 5(a)**

**(Source adapted from: © Nigel Downer/Science Photo Library)**

**Question 10(b)(ii)**

**(Source adapted from: © Science Photo Library C047/6177)**